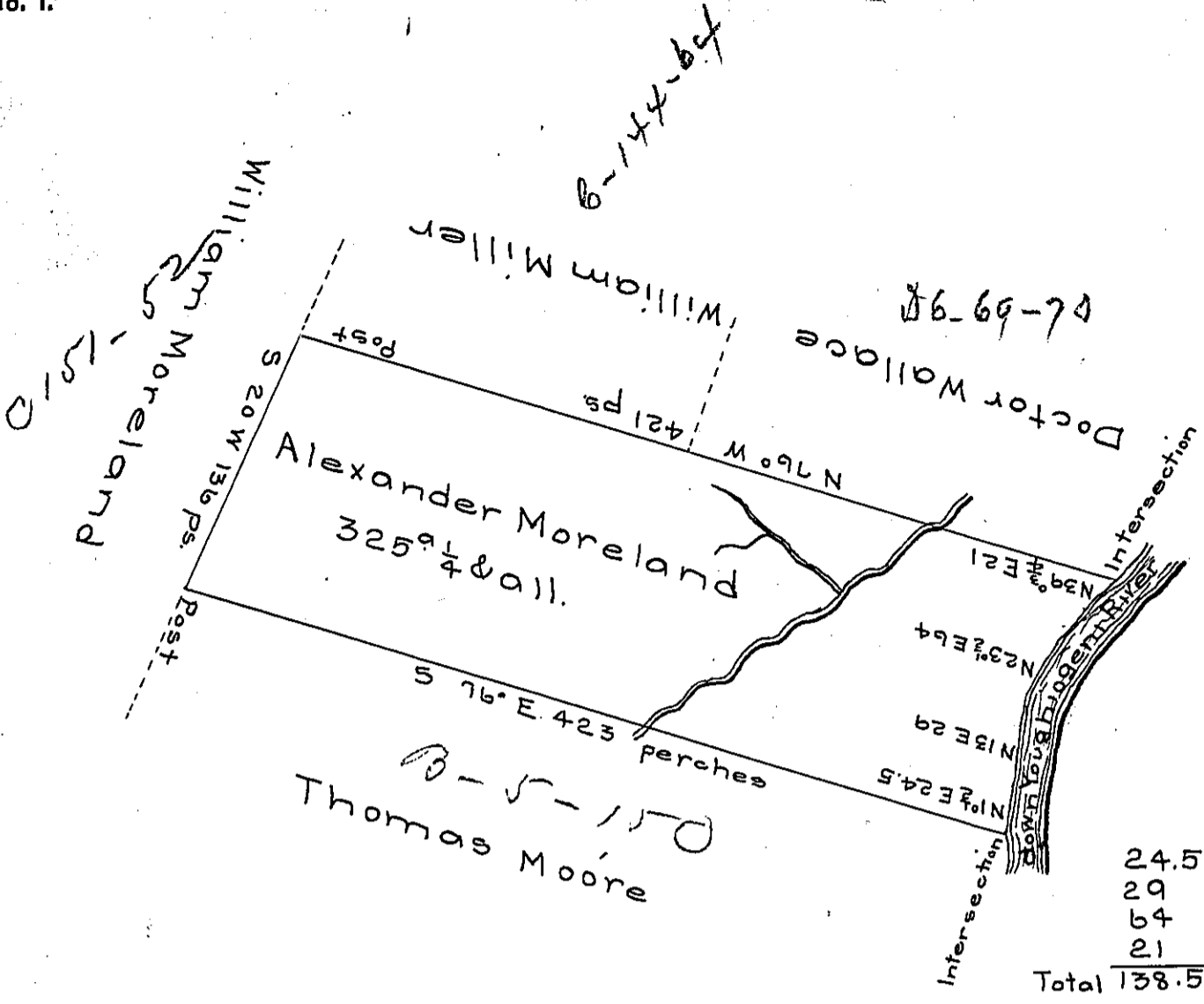


Note, the courses of this survey are on the Variation of 1769



Situate on the South side of Youghiogeni River near Stewards Crossings in Franklin township Fayette County & Surveyed the 14th day of April 1789. In pursuance of a warrant dated the 30th day of May 1788.

To John Lukens Esquire Alexander McClean Deputy
Surveyor General

IN TESTIMONY that the above is a copy of the original remaining on file in the Department of Internal Affairs of Pennsylvania, made conformably to an Act of Assembly approved the 16th day of February, 1833, I have hereunto set my Hand and caused the Seal of said Department to be affixed at Harrisburg, this thirteenth day of December 1905

Francis P. ...
Secretary of Internal Affairs.